

1 CENTRALIZATOR TRONSON I

Nr. Crt.	Nr. Tronson	Nivel	Nr. apartament / anexa	Nr. Camere	Arie utila (mp)	Arie totala (mp)	Cota parti comune (%)	Cota parte teren (%)	Nr. Cadastral	Valoare de piata (EUP)
1		0	Garaj 1	1	21,40	21,40	1,471	0,582	51706-C3-U1	6,200
2		0	Garaj 2	1	21,40	21,40	1,471	0,582	51706-C3-U2	6,200
3		0	Garaj 3	1	21,70	21,70	1,471	0,590	51706-C3-U3	6,200
4		0	Garaj 4	1	21,70	21,70	1,471	0,590	51706-C3-U4	6,200
5		0	Garaj 5	1	24,10	24,10	1,471	0,655	51706-C3-U5	7,100
6		0	Garaj 6	1	24,10	24,10	1,471	0,663	51706-C3-U6	7,100
7		0	Garaj 7	1	24,10	24,10	1,471	0,655	51706-C3-U7	7,100
8		0	Garaj 8	1	26,90	26,90	1,471	0,731	51706-C3-U8	7,700
9		0	Garaj 9	1	26,27	26,27	1,471	0,714	51706-C3-U9	7,700
10		0	Garaj 10	1	26,27	26,27	1,471	0,714	51706-C3-U10	7,700
11		0	Garaj 11	1	24,60	24,60	1,471	0,669	51706-C3-U11	7,100
12		0	Garaj 12	1	21,40	21,40	1,471	0,582	51706-C3-U12	6,200
13		0	Garaj 13	1	21,70	21,70	1,471	0,590	51706-C3-U13	6,200
14		0	Garaj 14	1	21,70	21,70	1,471	0,590	51706-C3-U14	6,200
15		0	Garaj 15	1	21,40	21,40	1,471	0,582	51706-C3-U15	6,200
16		0	Boxa 1	1	3,20	3,20	1,471	0,087	51706-C3-U16	500
17		0	Boxa 2	1	3,00	3,00	1,471	0,082	51706-C3-U17	450
18		0	Boxa 3	1	3,00	3,00	1,471	0,082	51706-C3-U18	450
19		0	Boxa 4	1	3,10	3,10	1,471	0,084	51706-C3-U19	450
20		0	Boxa 5	1	3,10	3,10	1,471	0,084	51706-C3-U20	450
21		0	Boxa 6	1	3,70	3,70	1,471	0,101	51706-C3-U21	550
22		0	Boxa 7	1	3,20	3,20	1,471	0,087	51706-C3-U22	500
23		0	Boxa 8	1	3,20	3,20	1,471	0,087	51706-C3-U23	500
24		0	Boxa 9	1	3,20	3,20	1,471	0,087	51706-C3-U24	500
25		0	Boxa 10	1	3,20	3,20	1,471	0,087	51706-C3-U25	500
26		0	Boxa 11	1	3,00	3,00	1,471	0,082	51706-C3-U26	450
27		0	Boxa 12	1	2,70	2,70	1,471	0,073	51706-C3-U27	400
28		0	Boxa 13	1	2,70	2,70	1,471	0,073	51706-C3-U28	400
29		1	Apartament 1	3	91,30	106,50	1,471	2,481	51706-C3-U29	56,500
30		1	Apartament 2	3	87,40	102,60	1,471	2,375	51706-C3-U30	56,500
31		1	Apartament 3	2	71,40	86,20	1,471	1,940	51706-C3-U31	44,000
32		1	Apartament 4	2	67,60	81,70	1,471	1,837	51706-C3-U32	44,000
33		1	Apartament 5	3	92,60	107,90	1,471	2,516	51706-C3-U33	56,500
34		1	Apartament 6	2	72,10	86,30	1,471	1,959	51706-C3-U34	44,000
35		2	Apartament 7	3	91,30	106,50	1,471	2,481	51706-C3-U35	56,500
36		2	Apartament 8	3	87,40	102,60	1,471	2,375	51706-C3-U36	56,500
37		2	Apartament 9	2	71,40	86,20	1,471	1,940	51706-C3-U37	44,000
38		2	Apartament 10	2	67,60	81,70	1,471	1,837	51706-C3-U38	44,000
39		2	Apartament 11	3	92,60	107,90	1,471	2,516	51706-C3-U39	56,500
40		2	Apartament 12	2	72,10	86,30	1,471	1,959	51706-C3-U40	44,000
41		3	Apartament 13	3	91,30	106,50	1,471	2,481	51706-C3-U41	56,500
42		3	Apartament 14	3	87,40	102,60	1,471	2,375	51706-C3-U42	56,500
43		3	Apartament 15	2	71,40	86,20	1,471	1,940	51706-C3-U43	44,000
44		3	Apartament 16	2	67,60	81,70	1,471	1,837	51706-C3-U44	44,000
45		3	Apartament 17	3	92,60	107,90	1,471	2,516	51706-C3-U45	56,500
46		3	Apartament 18	2	72,10	86,30	1,471	1,959	51706-C3-U46	44,000
47		4	Apartament 19	3	91,30	106,50	1,471	2,481	51706-C3-U47	56,500
48		4	Apartament 20	3	87,40	102,60	1,471	2,375	51706-C3-U48	56,500
49		4	Apartament 21	2	71,40	86,20	1,471	1,940	51706-C3-U49	44,000
50		4	Apartament 22	2	67,60	81,70	1,471	1,837	51706-C3-U50	44,000
51		4	Apartament 23	3	92,60	107,90	1,471	2,516	51706-C3-U51	56,500
52		4	Apartament 24	2	72,10	86,30	1,471	1,959	51706-C3-U52	44,000
53		5	Apartament 25	3	91,30	106,50	1,471	2,481	51706-C3-U53	56,500
54		5	Apartament 26	3	87,40	102,60	1,471	2,375	51706-C3-U54	56,500
55		5	Apartament 27	2	71,40	86,20	1,471	1,940	51706-C3-U55	44,000
56		5	Apartament 28	2	67,60	81,70	1,471	1,837	51706-C3-U56	44,000
57		5	Apartament 29	3	92,60	107,90	1,471	2,516	51706-C3-U57	56,500
58		5	Apartament 30	2	72,10	86,30	1,471	1,959	51706-C3-U58	44,000
59		6	Apartament 31	3	91,30	106,50	1,471	2,481	51706-C3-U59	56,500
60		6	Apartament 32	3	87,40	102,60	1,471	2,375	51706-C3-U60	56,500
61		6	Apartament 33	2	71,40	86,20	1,471	1,940	51706-C3-U61	44,000
62		6	Apartament 34	2	67,60	81,70	1,471	1,837	51706-C3-U62	44,000
63		6	Apartament 35	3	92,60	107,90	1,471	2,516	51706-C3-U63	56,500
64		6	Apartament 36	2	72,10	86,30	1,471	1,959	51706-C3-U64	44,000
65		7	Apartament 37	4	107,00	138,40	1,471	2,908	51706-C3-U65	65,500
66		7	Apartament 38	3	100,20	164,50	1,471	2,723	51706-C3-U66	62,000
67		7	Apartament 39	3	88,40	118,80	1,471	2,402	51706-C3-U67	56,500
68		7	Apartament 40	3	100,50	164,20	1,471	2,371	51706-C3-U68	62,000

2 CENTRALIZATOR TRONSON II

Nr. Crt.	Nr. Tronson	Nivel	Nr. apartament / anexa	Nr. Camere	Arie utila (mp)	Arie totala (mp)	Cota parti comune (%)	Cota parte teren (%)	Nr. Cadastral	Valoarea de piata (EUR)
1	2	0	Garaj 1	1	21,40	21,40	1,449	0,548	51707-C4-U1	6,200
2		0	Garaj 2	1	21,70	21,70	1,449	0,556	51707-C4-U2	6,200
3		0	Garaj 3	1	21,70	21,70	1,449	0,556	51707-C4-U3	6,200
4		0	Garaj 4	1	21,40	21,40	1,449	0,548	51707-C4-U4	6,200
5		0	Garaj 5	1	24,10	24,10	1,449	0,617	51707-C4-U5	7,100
6		0	Garaj 6	1	24,40	24,40	1,449	0,625	51707-C4-U6	7,100
7		0	Garaj 7	1	24,10	24,10	1,449	0,617	51707-C4-U7	7,100
8		0	Garaj 8	1	24,20	24,20	1,449	0,620	51707-C4-U8	7,100
9		0	Garaj 9	1	21,70	21,70	1,449	0,556	51707-C4-U9	6,200
10		0	Garaj 10	1	21,70	21,70	1,449	0,556	51707-C4-U10	6,200
11		0	Garaj 11	1	21,70	21,70	1,449	0,556	51707-C4-U11	6,200
12		0	Garaj 12	1	22,30	22,30	1,449	0,571	51707-C4-U12	6,400
13		0	Garaj 13	1	19,40	19,40	1,449	0,497	51707-C4-U13	6,000
14		0	Garaj 14	1	19,10	19,10	1,449	0,489	51707-C4-U14	6,000
15		0	Garaj 15	1	24,10	24,10	1,449	0,617	51707-C4-U15	7,100
16		0	Garaj 16	1	24,70	24,70	1,449	0,632	51707-C4-U16	7,100
17		0	Garaj 17	1	24,70	24,70	1,449	0,632	51707-C4-U17	7,100
18		0	Garaj 18	1	24,30	24,30	1,449	0,622	51707-C4-U18	7,100
19		0	Boxa 2	1	3,00	3,00	1,449	0,077	51707-C4-U20	450
20		0	Boxa 3	1	2,90	2,90	1,449	0,074	51707-C4-U21	450
21		0	Boxa 4	1	3,10	3,10	1,449	0,079	51707-C4-U22	450
22		0	Boxa 5	1	3,10	3,10	1,449	0,079	51707-C4-U23	450
23		0	Boxa 6	1	3,00	3,00	1,449	0,077	51707-C4-U24	450
24		0	Boxa 7	1	2,80	2,80	1,449	0,072	51707-C4-U25	450
25		0	Boxa 8	1	2,70	2,70	1,449	0,069	51707-C4-U26	450
26		0	Boxa 9	1	2,70	2,70	1,449	0,069	51707-C4-U27	450
27		0	Boxa 10	1	2,90	2,90	1,449	0,074	51707-C4-U28	450
28		1	Boxa 11	1	3,00	3,00	1,449	0,077	51707-C4-U29	450
29		1	Apartment 1	3	92,30	107,60	1,449	2,363	51707-C4-U30	56,500
30		1	Apartment 2	4	112,30	128,20	1,449	2,875	51707-C4-U31	68,500
31		1	Apartment 3	2	71,40	86,20	1,449	1,828	51707-C4-U32	44,000
32		1	Apartment 4	2	67,50	81,60	1,449	1,728	51707-C4-U33	44,000
33		1	Apartment 5	3	92,40	107,70	1,449	2,365	51707-C4-U34	56,500
34		2	Apartment 7	3	92,30	107,60	1,449	2,363	51707-C4-U36	56,500
35		2	Apartment 8	4	112,30	128,20	1,449	2,875	51707-C4-U37	68,500
36		2	Apartment 9	2	71,40	86,20	1,449	1,828	51707-C4-U38	44,000
37		2	Apartment 10	2	67,50	81,60	1,449	1,728	51707-C4-U39	44,000
38		2	Apartment 11	3	92,40	107,70	1,449	2,365	51707-C4-U40	56,500
39		3	Apartment 14	4	112,30	128,20	1,449	2,875	51707-C4-U43	68,500
40		3	Apartment 15	2	71,40	86,20	1,449	1,828	51707-C4-U44	44,000
41	3	Apartment 16	2	67,50	81,60	1,449	1,728	51707-C4-U45	44,000	
42	3	Apartment 17	3	92,40	107,70	1,449	2,365	51707-C4-U46	56,500	
43	4	Apartment 19	3	92,30	107,60	1,449	2,363	51707-C4-U48	56,500	
44	4	Apartment 20	4	112,30	128,20	1,449	2,875	51707-C4-U49	68,500	
45	4	Apartment 21	2	71,40	86,20	1,449	1,828	51707-C4-U50	44,000	
46	4	Apartment 22	2	67,50	81,60	1,449	1,728	51707-C4-U51	44,000	
47	4	Apartment 23	3	92,40	107,70	1,449	2,365	51707-C4-U52	56,500	
48	5	Apartment 24	2	72,00	86,20	1,449	1,843	51707-C4-U53	44,000	
49	5	Apartment 25	3	92,30	107,60	1,449	2,363	51707-C4-U54	56,500	
50	5	Apartment 26	4	112,30	128,20	1,449	2,875	51707-C4-U55	68,500	
51	5	Apartment 27	2	71,40	86,20	1,449	1,828	51707-C4-U56	44,000	
52	5	Apartment 28	2	67,50	81,60	1,449	1,728	51707-C4-U57	44,000	
53	5	Apartment 29	3	92,40	107,70	1,449	2,365	51707-C4-U58	56,500	
54	6	Apartment 30	2	72,00	86,20	1,449	1,843	51707-C4-U59	44,000	
55	6	Apartment 31	3	92,30	107,60	1,449	2,363	51707-C4-U60	56,500	
56	6	Apartment 32	4	112,30	128,20	1,449	2,875	51707-C4-U61	68,500	
57	6	Apartment 33	2	71,40	86,20	1,449	1,828	51707-C4-U62	44,000	
58	6	Apartment 34	2	67,50	81,60	1,449	1,728	51707-C4-U63	44,000	
59	6	Apartment 35	3	92,40	107,70	1,449	2,365	51707-C4-U64	56,500	
60	7	Apartment 36	2	72,00	86,20	1,449	1,843	51707-C4-U65	44,000	
61	7	Apartment 37	4	109,40	144,90	1,449	2,801	51707-C4-U66	68,500	
62	7	Apartment 38	4	121,80	189,90	1,449	3,118	51707-C4-U67	74,200	
63	7	Apartment 39	3	88,40	118,80	1,449	2,263	51707-C4-U68	56,500	
64	7	Apartment 40	3	100,30	163,70	1,449	2,568	51707-C4-U69	62,000	

3 CENTRALIZATOR GARAJE SI LOCURI DE PARCARE EXTERIOARE

Nr. Crt.	Nr. Lot	Denumire	Cod constructie	Arie construita la sol (mp)	Nr. cadastral	Valoare de piata (EUR)	Pret minim de vanzare (EUR)	Valoarea de piata (EUR)
1	Lot 2	Garaj exterior	C3	22,00	54410	5,786	6,000	6,400
2	Lot 4	Garaj exterior	C5	22,00	54412	5,786	6,000	6,400
3	Lot 5	Garaj exterior	C6	23,00	54413	6,049	6,500	6,400
4	Lot 7	Garaj exterior	C8	23,00	54415	6,049	6,500	6,400
5	Lot 8	Garaj exterior	C9	22,00	54416	5,786	6,000	6,400
6	Lot 9	Garaj exterior	C10	23,00	54417	6,049	6,500	6,400
7	Lot 10	Garaj exterior	C11	22,00	54418	5,786	6,000	6,400
8	Lot 11	Garaj exterior	C12	23,00	54419	6,049	6,500	6,400
9	Lot 14	Garaj exterior	C15	21,00	54422	5,523	6,000	6,400
10	Lot 15	Garaj exterior	C16	21,00	54423	5,523	6,000	6,400
11	Lot 16	Garaj exterior	C17	22,00	54424	5,786	6,000	6,400
12	Lot 17	Garaj exterior	C18	21,00	54425	5,523	6,000	6,400
13	Lot 18	Garaj exterior	C19	21,00	54426	5,523	6,000	6,400
14	Lot 19	Garaj exterior	C20	22,00	54427	5,786	6,000	6,400
15	Lot 20	Garaj exterior	C21	21,00	54428	5,523	6,000	6,400
16	Lot 21	Garaj exterior	C22	21,00	54429	5,523	6,000	6,400
17	Lot 22	Garaj exterior	C23	22,00	54430	5,786	6,000	6,400
18	Lot 23	Garaj exterior	C24	23,00	54431	6,049	6,500	6,400
19	Lot 24	Garaj exterior	C25	22,00	54432	5,786	6,000	6,400
20	Lot 25	Garaj exterior	C26	23,00	54433	6,049	6,500	6,400
21	Lot 26	Garaj exterior	C28	23,00	54434	6,049	6,500	6,400
22	Lot 27	Garaj exterior	C29	23,00	54435	6,049	6,500	6,400
23	Lot 28	Garaj exterior	C30	24,00	54436	6,312	6,500	6,400
24	Lot 29	Garaj exterior	C31	22,00	54437	5,786	6,000	6,400
25	Lot 30	Garaj exterior	C32	21,00	54438	5,523	6,000	6,400
26	Lot 31	Garaj exterior	C33	22,00	54439	5,786	6,000	6,400
27	Lot 32	Garaj exterior	C34	21,00	54440	5,523	6,000	6,400
28	Lot 33	Garaj exterior	C35	22,00	54441	5,786	6,000	6,400
29	Lot 35	Parcare exterioara	-	18,00	54443	2,232	2,500	2,300
30	Lot 36	Parcare exterioara	-	18,00	54444	2,232	2,500	2,300
31	Lot 37	Parcare exterioara	-	18,00	54445	2,232	2,500	2,300
32	Lot 38	Parcare exterioara	-	18,00	54446	2,232	2,500	2,300
33	Lot 39	Parcare exterioara	-	18,00	54447	2,232	2,500	2,300
34	Lot 40	Parcare exterioara	-	18,00	54448	2,232	2,500	2,300
35	Lot 41	Parcare exterioara	-	18,00	54449	2,232	2,500	2,300
36	Lot 42	Parcare exterioara	-	18,00	54450	2,232	2,500	2,300
37	Lot 43	Parcare exterioara	-	18,00	54451	2,232	2,500	2,300
38	Lot 44	Parcare exterioara	-	18,00	54452	2,232	2,500	2,300
39	Lot 45	Parcare exterioara	-	18,00	54453	2,232	2,500	2,300
40	Lot 46	Parcare exterioara	-	18,00	54454	2,232	2,500	2,300
41	Lot 47	Parcare exterioara	-	18,00	54455	2,232	2,500	2,300
42	Lot 48	Parcare exterioara	-	18,00	54456	2,232	2,500	2,300
43	Lot 49	Parcare exterioara	-	18,00	54457	2,232	2,500	2,300

4 FOTOGRAFII COMPLEX ANOTIMPURI



Vedere generala: Tronson I + Tronson II



Garaje exterioare



Vecinatati

4.1 Prezentarea Tronsonului I



Etaj 7-Ap. 40





Etaj 7-Ap. 39



Etaj 7-Lift + hol





Etaj 7-Ap. 37



Etaj 7-Ap. 38



Etaj 6-Ap. 36 – idem ap. 6; 12; 18; 24; 30



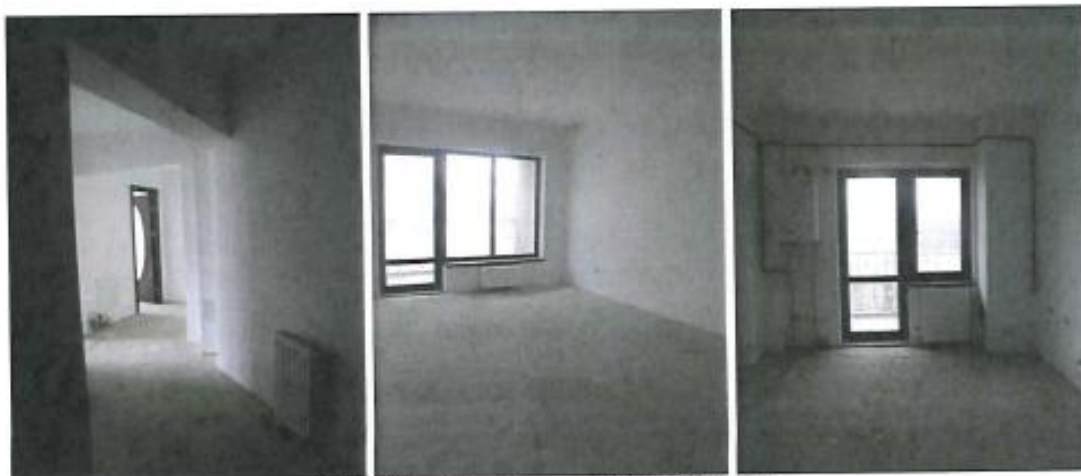
Etaj 5-Ap. 29 – idem ap. 5; 11; 17; 23; 35



Etaj 4-Ap. 22 – idem ap. 4; 10; 16; 28; 34



Etaj 3-Ap. 15 – idem ap. 3; 9; 21; 27; 33



Etaj 2-Ap. 8 – idem ap. 2; 14; 20; 26; 32



Etaj 1-Ap. 1 – idem ap. 7; 13; 19; 25; 31



Parter-hol intrare + camera centrala termica



Garaje parter



Parter-garaj + boxa



Parter-hol +garaj + boxa

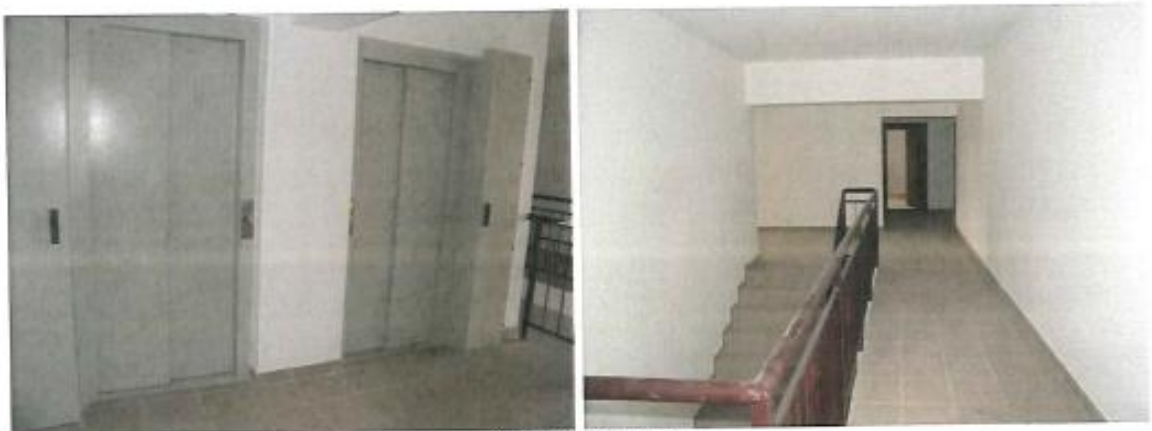
4.2 Prezentarea Tronsonului II



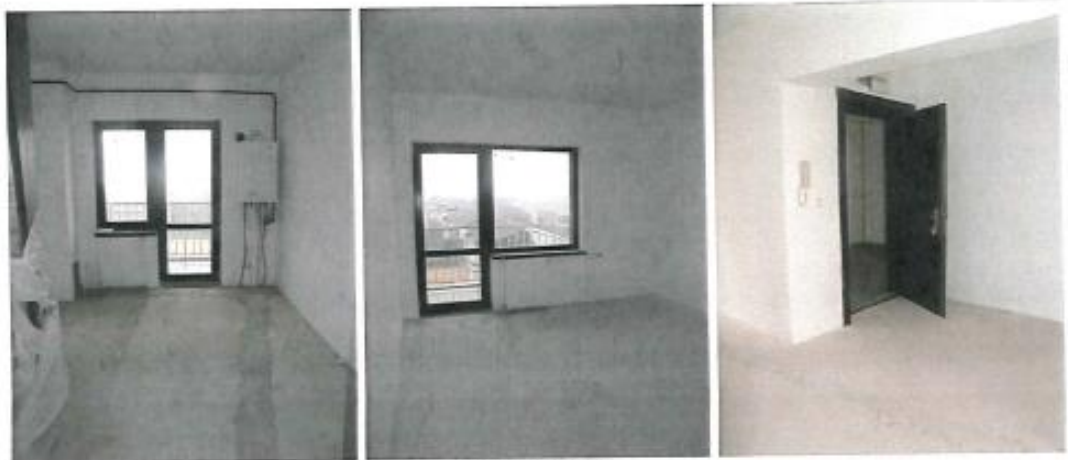
Etaj 7-Ap. 40



Etaj 7-Ap. 39



Etaj 7-Lift + hol



Etaj 7-Ap. 38



Etaj 7-Ap. 37



Etaj 6-Ap. 36 – idem ap. 30; 24; 18; 12; 6



Etaj 5-Ap. 29 – idem ap. 35; 23; 17; 11; 5



Etaj 4-Ap. 22 – idem ap. 34; 28; 16; 10; 4



Etaj 4-Hol



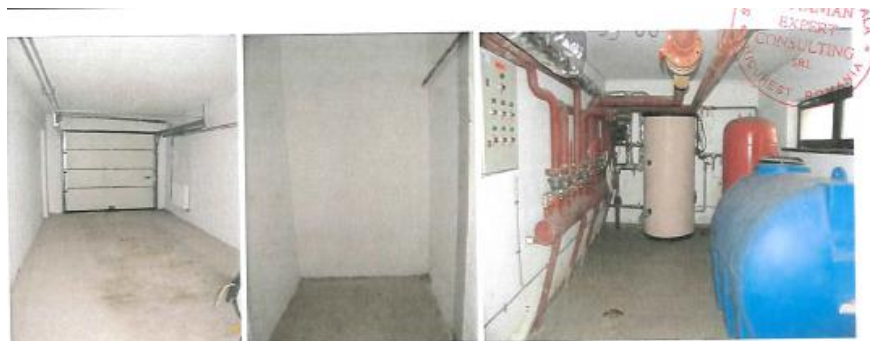
Etaj 2-Ap. 9 – idem ap. 33; 27; 21; 15; 3



Etaj 2-Ap. 8 – idem ap. 32; 26; 20; 14; 2



Etaj 1-Ap. 1 – idem ap. 31; 25; 19; 13; 7;



Parter: garaje + boxe + camera centrala



Parter

4.3 Prezentarea garajelor si locurilor de parcare exterioare



