

## 1 CENTRALIZATOR TRONSON I

Nr. Crt.	Nr. Tronson	Nivel	Nr. apartament / anexa	Nr. Camere	Arie utila (mp)	Arie totala (mp)	Cota parti comune (%)	Cota parte teren (%)	Nr. Cadastral	Valoare de piata (EUR)
1		0	Garaj 1	1	21,40	21,40	1,471	0,582	51706-C3-U1	6,200
2		0	Garaj 2	1	21,40	21,40	1,471	0,582	51706-C3-U2	6,200
3		0	Garaj 3	1	21,70	21,70	1,471	0,590	51706-C3-U3	6,200
4		0	Garaj 4	1	21,70	21,70	1,471	0,590	51706-C3-U4	6,200
5		0	Garaj 5	1	24,10	24,10	1,471	0,655	51706-C3-U5	7,100
6		0	Garaj 6	1	24,10	24,10	1,471	0,663	51706-C3-U6	7,100
7		0	Garaj 7	1	24,10	24,10	1,471	0,655	51706-C3-U7	7,100
8		0	Garaj 8	1	26,90	26,90	1,471	0,731	51706-C3-U8	7,700
9		0	Garaj 9	1	26,27	26,27	1,471	0,714	51706-C3-U9	7,700
10		0	Garaj 10	1	26,27	26,27	1,471	0,714	51706-C3-U10	7,700
11		0	Garaj 11	1	24,60	24,60	1,471	0,669	51706-C3-U11	7,100
12		0	Garaj 12	1	21,40	21,40	1,471	0,582	51706-C3-U12	6,200
13		0	Garaj 13	1	21,70	21,70	1,471	0,590	51706-C3-U13	6,200
14		0	Garaj 14	1	21,70	21,70	1,471	0,590	51706-C3-U14	6,200
15		0	Garaj 15	1	21,40	21,40	1,471	0,582	51706-C3-U15	6,200
16		0	Boxa 1	1	3,20	3,20	1,471	0,087	51706-C3-U16	500
17		0	Boxa 2	1	3,00	3,00	1,471	0,082	51706-C3-U17	450
18		0	Boxa 3	1	3,00	3,00	1,471	0,082	51706-C3-U18	450
19		0	Boxa 4	1	3,10	3,10	1,471	0,084	51706-C3-U19	450
20		0	Boxa 5	1	3,10	3,10	1,471	0,084	51706-C3-U20	450
21		0	Boxa 6	1	3,70	3,70	1,471	0,101	51706-C3-U21	550
22		0	Boxa 7	1	3,20	3,20	1,471	0,087	51706-C3-U22	500
23		0	Boxa 8	1	3,20	3,20	1,471	0,087	51706-C3-U23	500
24		0	Boxa 9	1	3,20	3,20	1,471	0,087	51706-C3-U24	500
25		0	Boxa 10	1	3,20	3,20	1,471	0,087	51706-C3-U25	500
26		0	Boxa 11	1	3,00	3,00	1,471	0,082	51706-C3-U26	450
27		0	Boxa 12	1	2,70	2,70	1,471	0,073	51706-C3-U27	400
28		0	Boxa 13	1	2,70	2,70	1,471	0,073	51706-C3-U28	400
29		1	Apartment 1	3	91,30	106,50	1,471	2,481	51706-C3-U29	56,500
30		1	Apartment 2	3	87,40	102,60	1,471	2,375	51706-C3-U30	56,500
31		1	Apartment 3	2	71,40	86,20	1,471	1,940	51706-C3-U31	44,000
32		1	Apartment 4	2	67,60	81,70	1,471	1,837	51706-C3-U32	44,000
33		1	Apartment 5	3	92,60	107,90	1,471	2,516	51706-C3-U33	56,500
34		1	Apartment 6	2	72,10	86,30	1,471	1,959	51706-C3-U34	44,000
35	1	2	Apartment 7	3	91,30	106,50	1,471	2,481	51706-C3-U35	56,500
36		2	Apartment 8	3	87,40	102,60	1,471	2,375	51706-C3-U36	56,500
37		2	Apartment 9	2	71,40	86,20	1,471	1,940	51706-C3-U37	44,000
38		2	Apartment 10	2	67,60	81,70	1,471	1,837	51706-C3-U38	44,000
39		2	Apartment 11	3	92,60	107,90	1,471	2,516	51706-C3-U39	56,500
40		2	Apartment 12	2	72,10	86,30	1,471	1,959	51706-C3-U40	44,000
41		3	Apartment 13	3	91,30	106,50	1,471	2,481	51706-C3-U41	56,500
42		3	Apartment 14	3	87,40	102,60	1,471	2,375	51706-C3-U42	56,500
43		3	Apartment 15	2	71,40	86,20	1,471	1,940	51706-C3-U43	44,000
44		3	Apartment 16	2	67,60	81,70	1,471	1,837	51706-C3-U44	44,000
45		3	Apartment 17	3	92,60	107,90	1,471	2,516	51706-C3-U45	56,500
46		3	Apartment 18	2	72,10	86,30	1,471	1,959	51706-C3-U46	44,000
47		4	Apartment 19	3	91,30	106,50	1,471	2,481	51706-C3-U47	56,500
48		4	Apartment 20	3	87,40	102,60	1,471	2,375	51706-C3-U48	56,500
49		4	Apartment 21	2	71,40	86,20	1,471	1,940	51706-C3-U49	44,000
50		4	Apartment 22	2	67,60	81,70	1,471	1,837	51706-C3-U50	44,000
51		4	Apartment 23	3	92,60	107,90	1,471	2,516	51706-C3-U51	56,500
52		4	Apartment 24	2	72,10	86,30	1,471	1,959	51706-C3-U52	44,000
53		5	Apartment 25	3	91,30	106,50	1,471	2,481	51706-C3-U53	56,500
54		5	Apartment 26	3	87,40	102,60	1,471	2,375	51706-C3-U54	56,500
55		5	Apartment 27	2	71,40	86,20	1,471	1,940	51706-C3-U55	44,000
56		5	Apartment 28	2	67,60	81,70	1,471	1,837	51706-C3-U56	44,000
57		5	Apartment 29	3	92,60	107,90	1,471	2,516	51706-C3-U57	56,500
58		5	Apartment 30	2	72,10	86,30	1,471	1,959	51706-C3-U58	44,000
59		6	Apartment 31	3	91,30	106,50	1,471	2,481	51706-C3-U59	56,500
60		6	Apartment 32	3	87,40	102,60	1,471	2,375	51706-C3-U60	56,500
61		6	Apartment 33	2	71,40	86,20	1,471	1,940	51706-C3-U61	44,000
62		6	Apartment 34	2	67,60	81,70	1,471	1,837	51706-C3-U62	44,000
63		6	Apartment 35	3	92,60	107,90	1,471	2,516	51706-C3-U63	56,500
64		6	Apartment 36	2	72,10	86,30	1,471	1,959	51706-C3-U64	44,000
65		7	Apartment 37	4	107,00	138,40	1,471	2,908	51706-C3-U65	65,500
66		7	Apartment 38	3	100,20	164,50	1,471	2,723	51706-C3-U66	62,000
67		7	Apartment 39	3	88,40	118,80	1,471	2,402	51706-C3-U67	56,500
68		7	Apartment 40	3	100,50	164,20	1,471	2,371	51706-C3-U68	62,000

## 2 CENTRALIZATOR TRONSON II

Nr. Crt.	Nr. Tronson	Nivel	Nr. apartament / anexa	Nr. Camere	Arie utila (mp)	Arie totala (mp)	Cota parti comune (%)	Cota parte teren (%)	Nr. Cadastral	Valoarea de piata (EUR)
1		0	Garaj 1	1	21,40	21,40	1,449	0,548	51707-C4-U1	6,200
2		0	Garaj 2	1	21,70	21,70	1,449	0,556	51707-C4-U2	6,200
3		0	Garaj 3	1	21,70	21,70	1,449	0,556	51707-C4-U3	6,200
4		0	Garaj 4	1	21,40	21,40	1,449	0,548	51707-C4-U4	6,200
5		0	Garaj 5	1	24,10	24,10	1,449	0,617	51707-C4-U5	7,100
6		0	Garaj 6	1	24,40	24,40	1,449	0,625	51707-C4-U6	7,100
7		0	Garaj 7	1	24,10	24,10	1,449	0,617	51707-C4-U7	7,100
8		0	Garaj 8	1	24,20	24,20	1,449	0,620	51707-C4-U8	7,100
9		0	Garaj 9	1	21,70	21,70	1,449	0,556	51707-C4-U9	6,200
10		0	Garaj 10	1	21,70	21,70	1,449	0,556	51707-C4-U10	6,200
11		0	Garaj 11	1	21,70	21,70	1,449	0,556	51707-C4-U11	6,200
12		0	Garaj 12	1	22,30	22,30	1,449	0,571	51707-C4-U12	6,400
13		0	Garaj 13	1	19,40	19,40	1,449	0,497	51707-C4-U13	6,000
14		0	Garaj 14	1	19,10	19,10	1,449	0,489	51707-C4-U14	6,000
15		0	Garaj 15	1	24,10	24,10	1,449	0,617	51707-C4-U15	7,100
16		0	Garaj 16	1	24,70	24,70	1,449	0,632	51707-C4-U16	7,100
17		0	Garaj 17	1	24,70	24,70	1,449	0,632	51707-C4-U17	7,100
18		0	Garaj 18	1	24,30	24,30	1,449	0,622	51707-C4-U18	7,100
19		0	Boxa 1	1	3,10	3,10	1,449	0,079	51707-C4-U19	450
20		0	Boxa 2	1	3,00	3,00	1,449	0,077	51707-C4-U20	450
21		0	Boxa 3	1	2,90	2,90	1,449	0,074	51707-C4-U21	450
22		0	Boxa 4	1	3,10	3,10	1,449	0,079	51707-C4-U22	450
23		0	Boxa 5	1	3,10	3,10	1,449	0,079	51707-C4-U23	450
24		0	Boxa 6	1	3,00	3,00	1,449	0,077	51707-C4-U24	450
25		0	Boxa 7	1	2,80	2,80	1,449	0,072	51707-C4-U25	450
26		0	Boxa 8	1	2,70	2,70	1,449	0,069	51707-C4-U26	450
27		0	Boxa 9	1	2,70	2,70	1,449	0,069	51707-C4-U27	450
28		0	Boxa 10	1	2,90	2,90	1,449	0,074	51707-C4-U28	450
29		1	Boxa 11	1	3,00	3,00	1,449	0,077	51707-C4-U29	450
30		1	Apartment 1	3	92,30	107,60	1,449	2,363	51707-C4-U30	56,500
31		1	Apartment 2	4	112,30	128,20	1,449	2,875	51707-C4-U31	68,500
32		1	Apartment 3	2	71,40	86,20	1,449	1,828	51707-C4-U32	44,000
33		1	Apartment 4	2	67,50	81,60	1,449	1,728	51707-C4-U33	44,000
34		1	Apartment 5	3	92,40	107,70	1,449	2,365	51707-C4-U34	56,500
35	2	2	Apartment 6	2	72,00	86,20	1,449	1,843	51707-C4-U35	44,000
36		2	Apartment 7	3	92,30	107,60	1,449	2,363	51707-C4-U36	56,500
37		2	Apartment 8	4	112,30	128,20	1,449	2,875	51707-C4-U37	68,500
38		2	Apartment 9	2	71,40	86,20	1,449	1,828	51707-C4-U38	44,000
39		2	Apartment 10	2	67,50	81,60	1,449	1,728	51707-C4-U39	44,000
40		2	Apartment 11	3	92,40	107,70	1,449	2,365	51707-C4-U40	56,500
41		3	Apartment 12	2	72,00	86,20	1,449	1,843	51707-C4-U41	44,000
42		3	Apartment 13	3	92,30	107,60	1,449	2,363	51707-C4-U42	56,500
43		3	Apartment 14	4	112,30	128,20	1,449	2,875	51707-C4-U43	68,500
44		3	Apartment 15	2	71,40	86,20	1,449	1,828	51707-C4-U44	44,000
45		3	Apartment 16	2	67,50	81,60	1,449	1,728	51707-C4-U45	44,000
46		3	Apartment 17	3	92,40	107,70	1,449	2,365	51707-C4-U46	56,500
47		4	Apartment 18	2	72,00	86,20	1,449	1,843	51707-C4-U47	44,000
48		4	Apartment 19	3	92,30	107,60	1,449	2,363	51707-C4-U48	56,500
49		4	Apartment 20	4	112,30	128,20	1,449	2,875	51707-C4-U49	68,500
50		4	Apartment 21	2	71,40	86,20	1,449	1,828	51707-C4-U50	44,000
51		4	Apartment 22	2	67,50	81,60	1,449	1,728	51707-C4-U51	44,000
52		4	Apartment 23	3	92,40	107,70	1,449	2,365	51707-C4-U52	56,500
53		5	Apartment 24	2	72,00	86,20	1,449	1,843	51707-C4-U53	44,000
54		5	Apartment 25	3	92,30	107,60	1,449	2,363	51707-C4-U54	56,500
55		5	Apartment 26	4	112,30	128,20	1,449	2,875	51707-C4-U55	68,500
56		5	Apartment 27	2	71,40	86,20	1,449	1,828	51707-C4-U56	44,000
57		5	Apartment 28	2	67,50	81,60	1,449	1,728	51707-C4-U57	44,000
58		5	Apartment 29	3	92,40	107,70	1,449	2,365	51707-C4-U58	56,500
59		6	Apartment 30	2	72,00	86,20	1,449	1,843	51707-C4-U59	44,000
60		6	Apartment 31	3	92,30	107,60	1,449	2,363	51707-C4-U60	56,500
61		6	Apartment 32	4	112,30	128,20	1,449	2,875	51707-C4-U61	68,500
62		6	Apartment 33	2	71,40	86,20	1,449	1,828	51707-C4-U62	44,000
63		6	Apartment 34	2	67,50	81,60	1,449	1,728	51707-C4-U63	44,000
64		6	Apartment 35	3	92,40	107,70	1,449	2,365	51707-C4-U64	56,500
65		7	Apartment 36	2	72,00	86,20	1,449	1,843	51707-C4-U65	44,000
66		7	Apartment 37	4	109,40	144,90	1,449	2,801	51707-C4-U66	68,500
67		7	Apartment 38	4	121,80	189,90	1,449	3,118	51707-C4-U67	74,200
68		7	Apartment 39	3	88,40	118,80	1,449	2,263	51707-C4-U68	56,500
69		7	Apartment 40	3	100,30	163,70	1,449	2,568	51707-C4-U69	62,000

### 3 CENTRALIZATOR GARAJE SI LOCURI DE PARCARE EXTERIOARE

Nr. Crt.	Nr. Lot	Denumire	Cod constructie	Arie constuita la sol (mp)	Nr. cadastral	Valoarea de piata (EUR)
1	Lot 2	Garaj exterior	C3	22,00	54410	6,400
2	Lot 3	Garaj exterior	C4	23,00	54411	6,400
3	Lot 4	Garaj exterior	C5	22,00	54412	6,400
4	Lot 5	Garaj exterior	C6	23,00	54413	6,400
5	Lot 6	Garaj exterior	C7	22,00	54414	6,400
6	Lot 7	Garaj exterior	C8	23,00	54415	6,400
7	Lot 8	Garaj exterior	C9	22,00	54416	6,400
8	Lot 9	Garaj exterior	C10	23,00	54417	6,400
9	Lot 10	Garaj exterior	C11	22,00	54418	6,400
10	Lot 11	Garaj exterior	C12	23,00	54419	6,400
11	Lot 14	Garaj exterior	C15	21,00	54422	6,400
12	Lot 15	Garaj exterior	C16	21,00	54423	6,400
13	Lot 16	Garaj exterior	C17	22,00	54424	6,400
14	Lot 17	Garaj exterior	C18	21,00	54425	6,400
15	Lot 18	Garaj exterior	C19	21,00	54426	6,400
16	Lot 19	Garaj exterior	C20	22,00	54427	6,400
17	Lot 20	Garaj exterior	C21	21,00	54428	6,400
18	Lot 21	Garaj exterior	C22	21,00	54429	6,400
19	Lot 22	Garaj exterior	C23	22,00	54430	6,400
20	Lot 23	Garaj exterior	C24	23,00	54431	6,400
21	Lot 24	Garaj exterior	C25	22,00	54432	6,400
22	Lot 25	Garaj exterior	C26	23,00	54433	6,400
23	Lot 26	Garaj exterior	C28	23,00	54434	6,400
24	Lot 27	Garaj exterior	C29	23,00	54435	6,400
25	Lot 28	Garaj exterior	C30	24,00	54436	6,400
26	Lot 29	Garaj exterior	C31	22,00	54437	6,400
27	Lot 30	Garaj exterior	C32	21,00	54438	6,400
28	Lot 31	Garaj exterior	C33	22,00	54439	6,400
29	Lot 32	Garaj exterior	C34	21,00	54440	6,400
30	Lot 33	Garaj exterior	C35	22,00	54441	6,400
31	Lot 35	Parcare exterioara	-	18,00	54443	2,300
32	Lot 36	Parcare exterioara	-	18,00	54444	2,300
33	Lot 37	Parcare exterioara	-	18,00	54445	2,300
34	Lot 38	Parcare exterioara	-	18,00	54446	2,300
35	Lot 39	Parcare exterioara	-	18,00	54447	2,300
36	Lot 40	Parcare exterioara	-	18,00	54448	2,300
37	Lot 41	Parcare exterioara	-	18,00	54449	2,300
38	Lot 42	Parcare exterioara	-	18,00	54450	2,300
39	Lot 43	Parcare exterioara	-	18,00	54451	2,300
40	Lot 44	Parcare exterioara	-	18,00	54452	2,300
41	Lot 45	Parcare exterioara	-	18,00	54453	2,300
42	Lot 46	Parcare exterioara	-	18,00	54454	2,300
43	Lot 47	Parcare exterioara	-	18,00	54455	2,300
44	Lot 48	Parcare exterioara	-	18,00	54456	2,300
45	Lot 49	Parcare exterioara	-	18,00	54457	2,300

4 FOTOGRAFII COMPLEX ANOTIMPURI



Vedere generala: Tronson I + Tronson II



Garaje exterioare



Vecinatati

4.1 Prezentarea Tronsonului I



Etaj 7-Ap. 40





Etaj 7-Ap. 39



Etaj 7-Lift + hol





Etaj 7-Ap. 37



Etaj 7-Ap. 38



Etaj 6-Ap. 36 – idem ap. 6; 12; 18; 24; 30



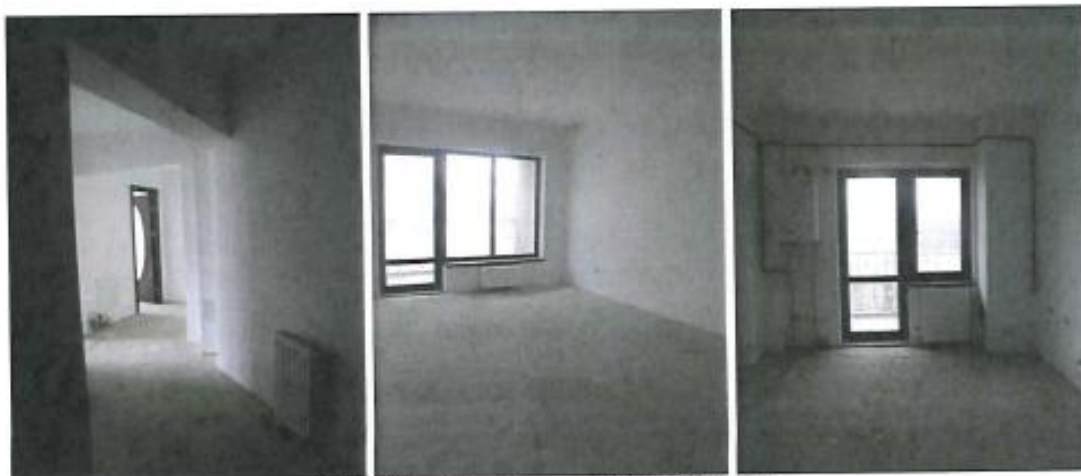
Etaj 5-Ap. 29 – idem ap. 5; 11; 17; 23; 35



Etaj 4-Ap. 22 – idem ap. 4; 10; 16; 28; 34



Etaj 3-Ap. 15 – idem ap. 3; 9; 21; 27; 33



Etaj 2-Ap. 8 – idem ap. 2; 14; 20; 26; 32



Etaj 1-Ap. 1 – idem ap. 7; 13; 19; 25; 31



Parter-hol intrare + camera centrala termica



Garaje parter



Parter-garaj + boxa



Parter-hol +garaj + boxa

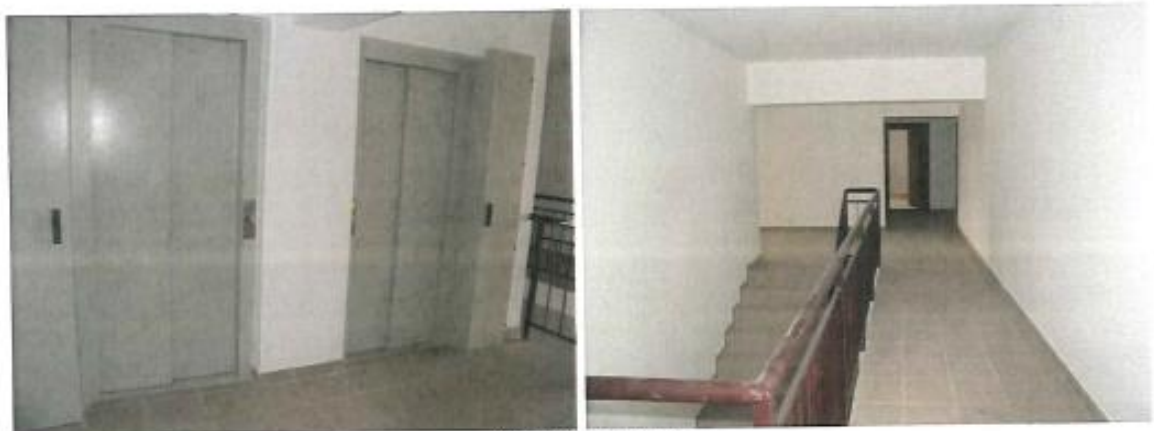
#### 4.2 Prezentarea Tronsonului II



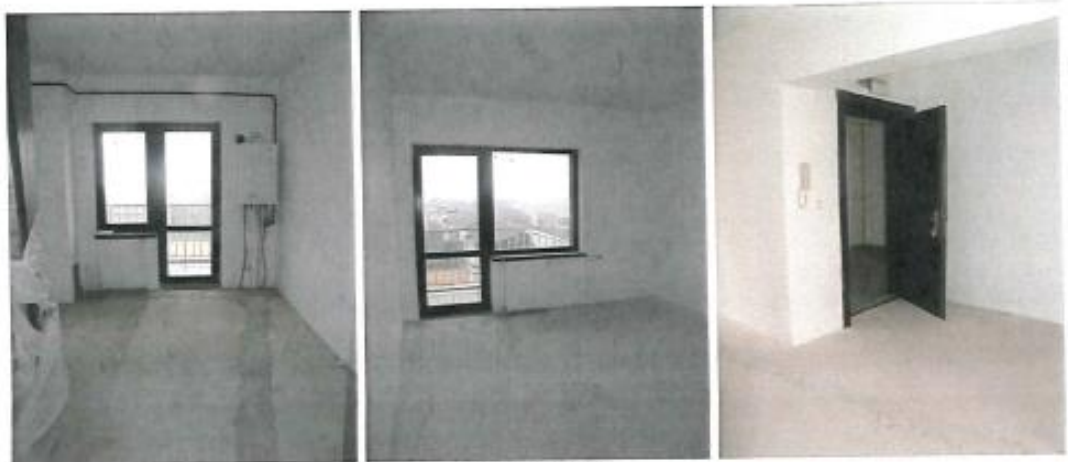
Etaj 7-Ap. 40



Etaj 7-Ap. 39



Etaj 7-Lift + hol



Etaj 7-Ap. 38



Etaj 7-Ap. 37



Etaj 6-Ap. 36 – idem ap. 30; 24; 18; 12; 6



Etaj 5-Ap. 29 – idem ap. 35; 23; 17; 11; 5



Etaj 4-Ap. 22 – idem ap. 34; 28; 16; 10; 4



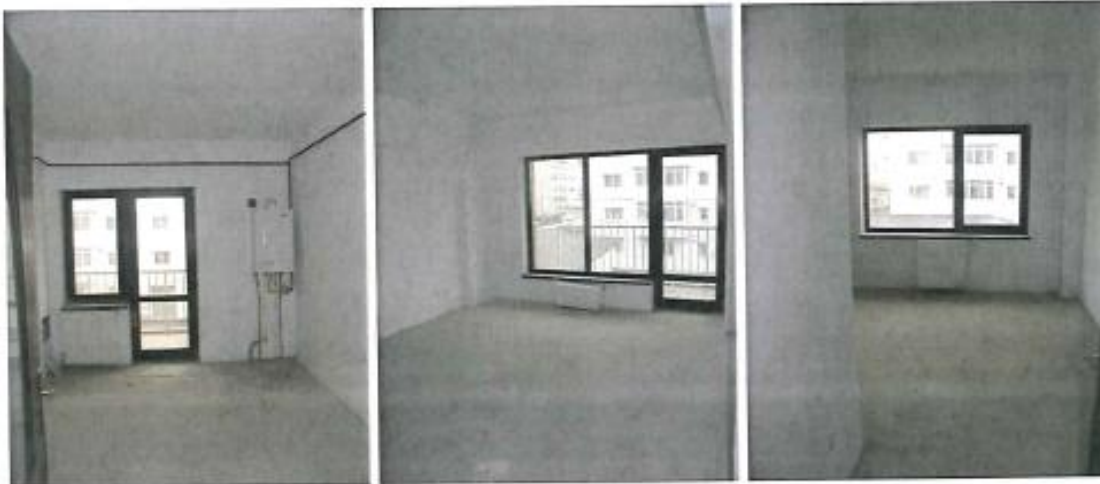
Etaj 4-Hol



Etaj 2-Ap. 9 – idem ap. 33; 27; 21; 15; 3



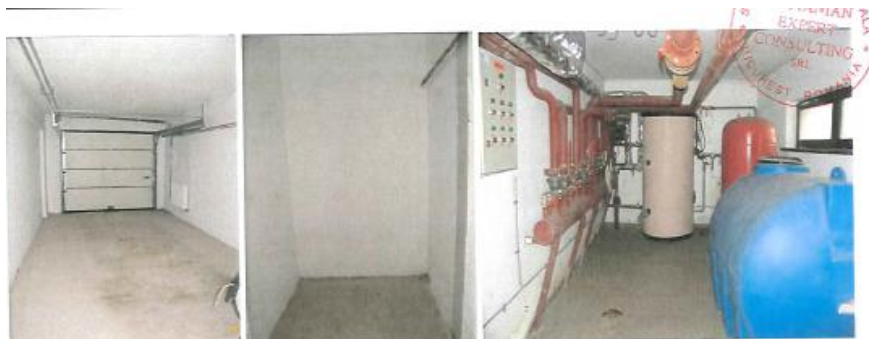
CONSULTING  
SRI  
BUCURESTI ROMANIA



Etaj 2-Ap. 8 – idem ap. 32; 26; 20; 14; 2



Etaj 1-Ap. 1 – idem ap. 31; 25; 19; 13; 7;



Parter: garaje + boxe + camera centrala



Parter

#### 4.3 Prezentarea garajelor si locurilor de parcare exterioare



